

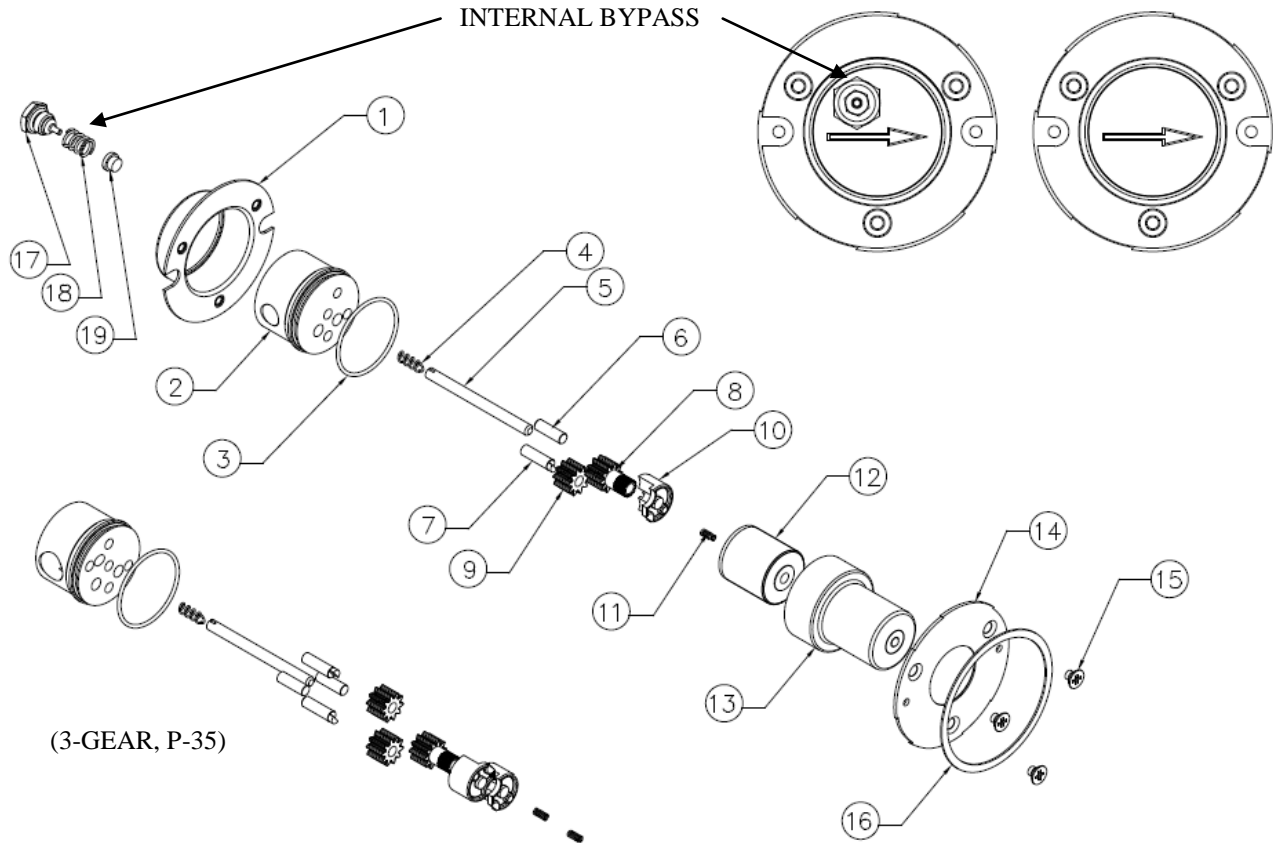


PART NUMBER:	L28653
--------------	--------

SERVICE INSTRUCTIONS: L28653

REVISION			
LTR.	DESCRIPTION	DATE	BY
B	REVISED PER ECN 8297	6/11/14	SMC

MOD: GB SERIES



GENERAL:

1. All service work should be performed in a clean area.
2. Care should be taken to avoid scratching any sealing surfaces or allowing material chips to come in contact with the Driven Magnet Assembly.
3. An even, light coat of high vacuum silicone grease (Dow Corning or equiv.) should be applied to all seals or O-Rings.
4. All assembly screws should be tightened evenly and in an alternating pattern.
5. Only Micropump factory authorized replacement parts should be used when servicing any Micropump products.

SPECIFIC:

1. Engage Spring (4) half loop into Drive Gear Shaft (5) slot and rotate Spring/Shaft assembly clockwise while pressing into Pump Body (2) as shown. Firmly seat the Spring/Shaft assembly into hole.
2. Orient Driven Gear Shaft(s) (7) to allow the step to engage with Suction Shoes(s) (10) permitting the Suction Shoe to seat flat against the Pump Body (2) face.
3. Complete assembly as shown above.
4. Torque screws (15) to 10 +1/-0 in.-lbs.
5. Gears (8 & 9) and Suction Shoe(s) (10) should always be replaced in matched set.
6. Adhere Gasket (16) concentrically to Mounting Plate (14).

MICROPUMP, INC.

A Unit of IDEX Corporation

PO Box 8975, Vancouver, WA 98668-8975 • Phone: 360/253-2008 • Fax: 360/253-8294

MICROPUMP LIMITED

A Subsidiary of Micropump, Inc.

Howard Road, Eaton Socon, St. Neots, Cambridgeshire, PE 19 8ET England, • Phone: (44) (0) 1480-356600 • Fax: (44) (0) 1480-356300