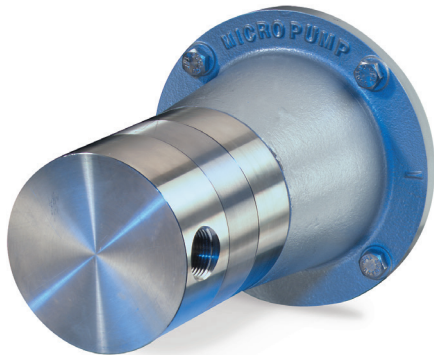
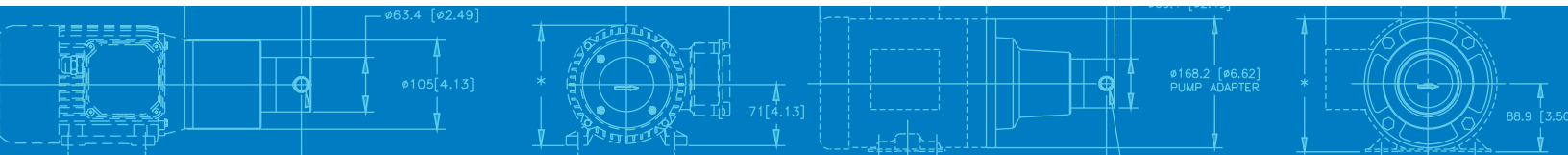


# Series GN

## MAGNETIC DRIVE GEAR PUMP



Series GN pumps deliver exceptional pumping performance for any high-precision application. These magnetically driven gear pumps feature a cavity style design with benefits such as chemical resistance, smooth pulseless fluid delivery, and high-system pressure capability. Available in standard and OEM configurations, Micropump's Series GN pumps keep your operations running smoothly.



### CAVITY STYLE PUMPS

Cavity style pumps are excellent for wide-ranging inlet and outlet operating conditions, and allow for intermittently pumping in reverse.

### SMALL SIZE

The miniature package size of the Series GN is easily incorporated into the design of many systems.

### FLUID PATH INTEGRITY

The magnetic drive and static o-ring seal(s) keep the fluid securely inside the pump and potential contaminants out.

### SMOOTH PULSELESS DELIVERY

Positive displacement, precision gears provide consistent fluid delivery in continuous processes.

### CHEMICALLY RESISTANT

Series GN has a long-life in aggressive environments.

### EASY TO SERVICE

Series GN pumps are easy to service using a Micropump service kit and simple hand tools.

### HIGH SYSTEM PRESSURE CAPABILITY

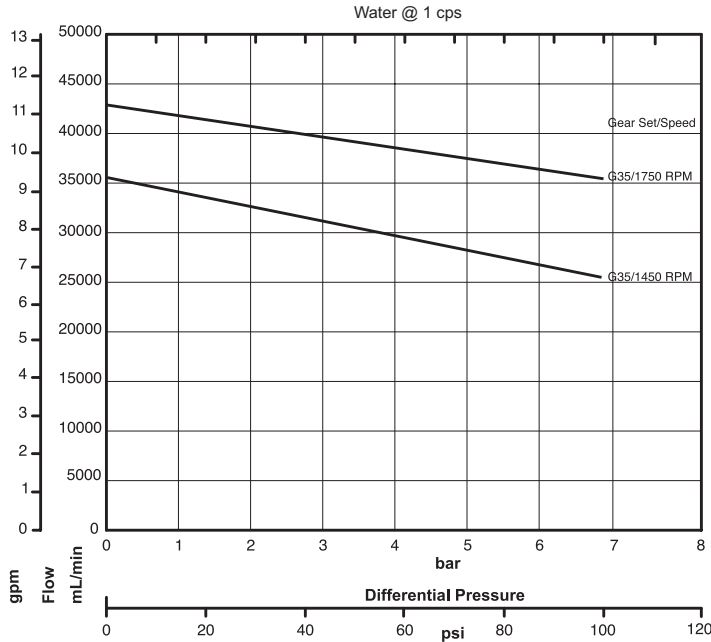
Optional version of the Series GN are designed to withstand system pressures up to 103 Bar (1500 psi).

### WIDE RANGE OF CONFIGURATIONS

Micropump's designs offer a wide range of configurations to meet your more challenging requirements including:

- ▶ Multiple gear, body, and o-ring materials
- ▶ High-torque magnets
- ▶ NEMA and IEC drive mounts

# PUMP PERFORMANCE



## PERFORMANCE SUMMARY

### FLOW RATE AT 1750 RPM

- ▶ 42.9 L/min (11.4 US gpm)

### DISPLACEMENT

- ▶ Gear Set G35
- ▶ mL/rev 24.5
- ▶ US gal/1000 rev 6.5

### MAXIMUM RATED DIFFERENTIAL PRESSURE

- ▶ 6.9 Bar (100 psi)

### MAXIMUM RATED SYSTEM PRESSURE

- ▶ 103 Bar (1500 psi)

### TEMPERATURE RANGE

- ▶ -46 to 121 °C (-50 to 250 °F)

### VISCOSITY RANGE

- ▶ 0.5 to 2500 cps

### MAXIMUM RECOMMENDED SPEED

- ▶ 1750 rpm

## PUMP CONSTRUCTION

- ▶ Magnetic drive gear pump
- ▶ Cavity style
- ▶ Three helical, shafted gears
- ▶ Stationary shafts
- ▶ O-ring seals

## WETTED MATERIALS

### BASE MATERIAL

- ▶ 316 stainless steel
- ▶ Alloy 20

### GEARS

- ▶ PEEK
- ▶ PTFE

### STATIC SEALS

- ▶ FKM
- ▶ PTFE
- ▶ TEV
- ▶ EP

## MAGNETS

### DRIVEN AND DRIVING

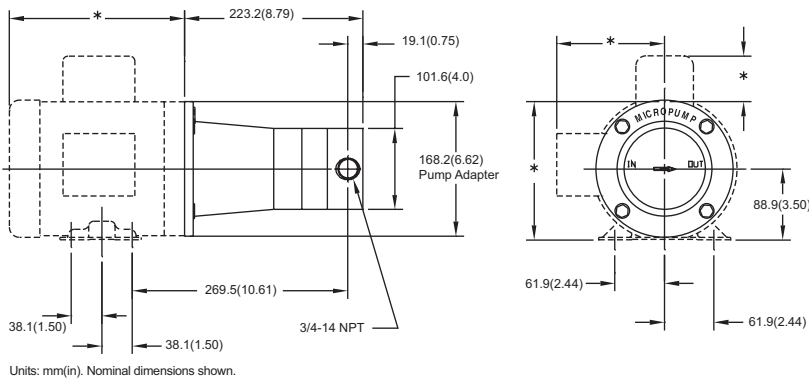
- ▶ Rare earth

## PRODUCT ENHANCEMENTS

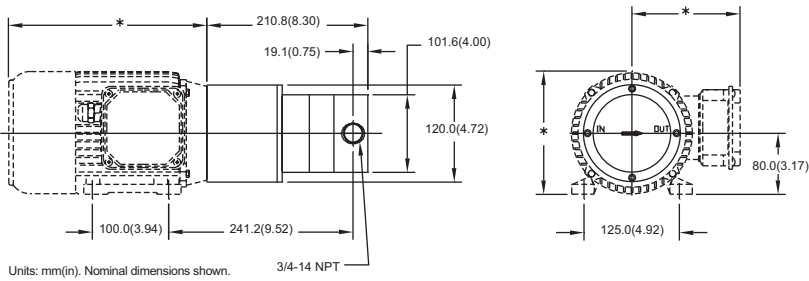
- ▶ High-system pressure
- ▶ Carbon bushings
- ▶ Hardened shafts

## DIMENSIONS

### NEMA 56C MOUNT



### IEC 71-B14 MOUNT



**MICROPUMP®**

Micropump, Inc | A Unit of IDEX Corp. | 1402 NE 136th Avenue • Vancouver, WA 98684

T 800.671.6269 • +1.360.253.2008 | F +1.360.253.8294 | info.micropump@idexcorp.com | www.micropump.com

ACTUAL PERFORMANCE MAY VARY. Specifications are subject to change without notice. ©2016 Micropump, Inc., A Unit of IDEX Corporation. Micropump and the Micropump logo are registered trademarks of Micropump, Inc.

REV. 5/17